

OBSERVATION OF A SOLAR PARTICLE EVENT ON THE INTERNATIONAL SPACE STATION IN MARCH 2012

**Jordanka Semkova¹, Tsvetan Dachev¹, Rositza Koleva¹, Stefan Maltchev¹, Nikolay Bankov¹,
Victor Benghin², Vyacheslav Shurshakov², Vladislav Petrov², Sergey Drobyshev²**

¹ Space Research and Technology Institute – Bulgarian Academy of Sciences

² State Scientific Center of Russian Federation, Institute of Biomedical Problems – Russian Academy of Sciences
e-mail: jsemkova@stil.bas.bg, v_benghin@mail.ru

Key words: space radiation dosimetry, International Space Station, solar energetic particles

Abstract: The Liulin-5 charged particle telescope observes the radiation characteristics in the spherical tissue-equivalent phantom of MATROSHKA-R international project on the International Space Station (ISS) since June 2007. In this paper attention is drawn to the results from the measurements of dose rate and particle flux increase during the solar energetic particles event (SPE) occurred 7-8.03.2012. During that SPE the solar particles penetrated at high geographic latitudes in the regions of the south and north Earth magnetic poles and at $3 < L$ they caused particle flux and dose rates increase in all three detectors of Liulin-5, located at 40, 60 and 165 mm depths along the phantom's radius. The maximum flux at 40 mm depth observed outside the South Atlantic Anomaly (SAA) during that SPE reached $7.2 \text{ part/cm}^2 \cdot \text{s}$ and the dose rate reached $107.8 \mu\text{Gy/hour}$ on 07.03.2012, 13:05 UT at $L = 4$. The additional absorbed dose received during SPE is approximately $180 \mu\text{Gy}$ and additional dose equivalent- approximately $448 \mu\text{Sv}$.

Compared are data from Liulin-5 and other particle detectors in space during and after that SPE.

НАБЛЮДЕНИЕ НА СЪБИТИЕ НА СЛЪНЧЕВИ ЕНЕРГИЙНИ ЧАСТИЦИ НА МЕЖДУНАРОДНАТА КОСМИЧЕСКА СТАНЦИЯ ПРЕЗ МАРТ 2012 Г

**Йорданка Семкова¹, Цветан Дачев¹, Росица Колева¹, Стефан Малчев¹, Николай Банков¹,
Виктор Бенгин², , Вячеслав Шуршаков², Владислав Петров², Сергей Дробышев²**

¹ Институт за космически изследвания и технологии – Българска академия на науките

² Институт по медико-биологични проблеми – Руска академия на науките
e-mail: jsemkova@stil.bas.bg, v_benghin@mail.ru

Ключови думи: космическа радиационна дозиметрия, Международна Космическа Станция, слънчеви енергийни частици

Резюме: С помощта на телескопа на заредени частици "Люлин-5" се изследват радиационните характеристики във сферичния тъканно-еквивалентен фантом в рамките на международния проект "Матрьошка-Р" на борда на Международната Космическа Станция (МКС). Експериментът се провежда от месец юни 2007г насам. В работата са представени резултати за изследването на потоците частици и мощността на радиационните дози по време на проникването на слънчеви енергийни частици (СЕЧ) на орбитата на МКС на 7-8.03.2012г, както и сравнение с данните от други детектори на заредени частици в космоса по време и след събитието на СЕЧ. По време на това събитие слънчевите частици проникнаха на високи географски ширини в районите на южния и северния магнитни полюси на Земята и на $3 < L$ те предизвикаха увеличение на потоците и мощността на дозите и в трите детектора на телескопа "Люлин-5", разположени съответно на 40, 60 и 165 mm дълбочина по протежение на радиуса в сферичния фантом. Максималният поток на 40 mm дълбочина, измерен извън вътрешния радиационен полюс, достигна $7.2 \text{ part/cm}^2 \cdot \text{s}$, а мощността на дозата достигна $107.8 \mu\text{Gy/hour}$ на 07.03.2012, 13:05 UT на $L = 4$. Допълнителната погълната доза по време на това събитие е около $180 \mu\text{Gy}$, а допълнителният дозов еквивалент е приблизително $448 \mu\text{Sv}$.

Introduction

Space radiation is a very important component of the space weather and affects both the space crew and the electronic devices in space flights. The radiation field in the ISS is complex, composed of galactic cosmic rays (GCR), trapped radiation of the Earth radiation belts, solar energetic particles, albedo particles from Earth's atmosphere and the secondary radiation produced in the shielding materials of the spacecraft and in human body.

The GCRs, consisting of 99% protons and He nuclei and 1% heavy ions with energies up to tens of GeV/nuc are a permanent source of ionizing radiation in the ISS. The GCR radiation in the near – Earth free space is approximately isotropic.

Another component of the incident radiation field in the ISS orbit are the trapped protons and electrons. The trapped protons of the inner radiation belt have energies up to several hundreds of MeV and contribute a large fraction of the dose rates outside and inside the ISS. The trapped protons are encountered by LEO spacecraft in the region of the South Atlantic Anomaly (SAA). Although only about 5% of the mission time of the ISS is spent in the SAA, the astronauts may collect more than 50% of their total absorbed dose during this short time period [1, 2].

The average kinetic energy of the inner zone trapped electrons is a few hundred keV. These electrons are easily removed from the spacecraft interior by the slightest amount of shielding and are mainly of concern to astronauts during extra-vehicular activities. At higher latitudes the ISS crosses the earthward part of the outer electron radiation belt. The average energy of these electrons is also about few hundred keV.

Solar Particle Events (short-term high-intensity bursts of protons and ions accelerated to hundreds of MeV) also contribute transient increases to the radiation environment. There are two ways SPEs can influence the radiation situation on low Earth orbit. The first one is the well known direct penetration of solar energetic particles into the magnetosphere. Only particles with energies higher than the geomagnetic cut-off energy can penetrate into the space station orbit. The time scale of such phenomena is about one-two days [3, 4]). The second one is an increase of the trapped particle flux when SPE particles act as an additional source of particles for trapping and subsequent radial diffusion into the inner magnetosphere. At some geomagnetic conditions SPE energetic particles can penetrate in the inner belt region and be trapped there [5, 6]. In such case the SPE-origin energetic particles can change dramatically the radiation environment on low earth orbit on a long-term time scale (up to several months). The Liulin radiometer–dosemeter onboard Mir space station [7] has collected data about radiation environment during number of SPEs in September-October 1989, March 1991, June 1991 and June 1992 [8-11]. During the SPE on September 29 1989 when the space station reached high latitudes in the near-polar geomagnetic regions ($L > 3.5$) dose rate and flux show a sharp rise up to $(8-9) \times 10^{-2}$ Gy/day and $200-250 \text{ cm}^{-2} \text{ s}^{-1}$, respectively. The flux exceeded 200-250 times and the dose rate exceeded 500-600 times the common for those regions values in the absence of SPE.

Dose characteristics in LEO depend also on many other parameters such as the solar cycle phase, spacecraft orbit parameters, helio – and geophysical parameters.

For the estimation of the organ doses from the complex radiation field in the ISS, and thus the radiation risk, measurements in human phantoms are essential. In 2004 the MATROSHKA-R international experiment was started on the Russian segment of the ISS. The experiment MATROSHKA-R includes the Russian spherical tissue–equivalent phantom [12], equipped with passive and active experiment packages for studies of the depth dose distribution at various sides of the organs of a human body exposed to cosmic radiation. Liulin-5 is an active experiment in the spherical phantom [2]. The aim of the Liulin-5 experiment is a long-term investigation of the radiation quantities in the phantom, using a telescope of three silicon detectors. The first stage of the Liulin-5 experiment on the ISS took place from June 2007 to June 2010, corresponding to very quiet solar conditions during the deep minimum of the 23rd solar cycle. Some results from those investigations can be found in [2, 13-15]. The second stage of the Liulin-5 experiment is conducted on the ISS since December 2011 to obtain data for radiation conditions during the solar activity increase in the 24th cycle. From December 2011 to May 2012 the spherical phantom with Liulin-5 instrument was located in the MIM1 module of the Russian Segment of the ISS. In this paper we present results of Liulin-5 measurements of the radiation parameters during the SPEs, which occurred during 7-12.03.2012.

Liulin-5 method and instrument

The Liulin-5 particle telescope is mounted inside the largest diameter channel of the phantom (Fig.1). More detailed description of Liulin-5 method and instrument can be found in [13]. The detector module of Liulin-5 contains three silicon detectors D1, D2 and D3 arranged as a telescope. The detectors axis is along the phantom's radius. The D1 detector is at 40 mm, D2 is at 60 mm and D3 is at 165 mm distance from the phantom's surface.

The position of D1 and D2 in the phantom corresponds approximately to the depth of the blood forming organs in human body, while D3 is placed very close to the phantom's centre. This arrangement allows measuring the dose-depth distribution along the sphere's radius.

The investigation of the radiation environment in the phantom in ISS by the Liulin-5 experiment envisages: i) measurement of the depth distributions of the energy deposition spectra, flux and dose rate, and absorbed dose D ; ii) measurement of the LET spectrum in silicon, and then calculation of LET spectrum in water and Q , according to the $Q(L)$ relationship given in ICRP60 [16], where L stays for LET. $Q(L)$ is related functionally to the unrestricted LET of a given radiation, and is multiplied by the absorbed dose to derive the dose equivalent H .

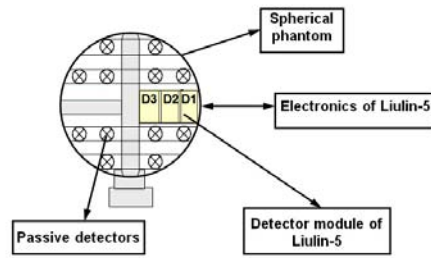


Fig.1. Liulin-5 onboard ISS. Upper-sketch of the detectors arrangement in the phantom, bottom- the spherical phantom, located in the MIM1 module. Inside the phantom (behind the label) is the detector block of Liulin-5.

Results and discussions

The results presented here deal with the flux and dose rates, LET spectra, obtained quality factors Q and dose equivalent values during and after SPE on March 07-12, 2012.

Distribution of dose rates and particle fluxes during quite conditions

A typical distribution of Liulin-5 particle flux and dose rate as a function of L -value is presented in Fig. 2. The data represent the measurements in detector D1 about 11 hours after the end of SPE observed on ISS orbit (see below). Well seen are the two main sources of radiation in a low Earth orbit – the GCR and the trapped protons of the inner radiation belt in SAA. At L values 1.1-1.8 both sources contribute to the measured flux. Maximum fluxes of $19.3 \text{ part/cm}^2\text{s}$ are registered from the trapped protons in SAA at $L \sim 1.24$. Minima values of about $0.035 \text{ part/cm}^2\text{s}$ were recorded at $L=1$ from GCR. The maximum dose rate in SAA was $370 \mu\text{Gy/h}$. Outside SAA the averaged flux was $0.2 \text{ part/cm}^2\text{s}$, averaged absorbed dose rate $2.65 \mu\text{Gy/h}$.

Distribution of dose rates and particle fluxes along the ISS orbits during SPE

On 07.03.2012 GOES registered the beginning of two SPE events (fluxes exceeding the threshold of $10 \text{ part/cm}^2\text{s.sr}$) at geostationary orbit. The greater than 100 MeV event began at 04:05 UT on 7.03.2012, reached a maximum of $69 \text{ part/cm}^2\text{s.sr}$ at 15:25 UT the same day, and ended at 16:50 UT on 10.03.2012. Also, a greater than 10 MeV event began at 05:10 UT on 7.03.2012, reached a maximum of $6530 \text{ part/cm}^2\text{s.sr}$ at 11:15 UT on 08.03.2012 and ended at 20:50 UT on 12.03.2012.

The first registration of particle flux and dose rate increase in Liulin-5 data was on 07.03.2012, at 13:01 UT, at $L=3$, $\text{Lat} = -42.3^\circ$, $\text{Long} = 136.6^\circ$, $\text{Alt} = 421.7 \text{ km}$. The last registration of flux and dose rate increase was on 08.03.2012, at 21:31 UT at $L=3.8$, $\text{Lat} = -48.8^\circ$, $\text{Long} = 71.3^\circ$, $\text{Alt} = 421.7 \text{ km}$. The increase of the particle flux and dose rates at $L > 3$ is observed in all three

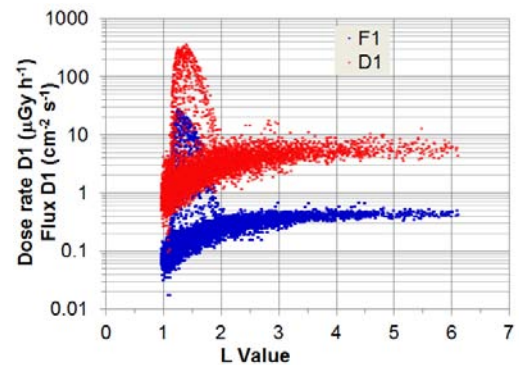


Fig. 2. Distribution of particle flux $F1$ (bottom) and dose rate (top) in D1 detector located at 40 mm depth in the phantom as a function of L value during quite conditions.

detectors of Liulin-5 located at 40, 60 and 165 mm depth along the radius of the spherical phantom. In Fig. 3 the distribution of the particle flux and the dose rate in D1 detector of Liulin-5 as a function of L-value is presented for the time interval 07.03.2012, 12:59 UT to 08.03.2012, 21:31 UT. In Fig. 4. the dose rate distribution in D1 for the same interval is presented in geographical coordinates. It is seen that Liulin-5 flux and dose rate increase is observed at $3 < L$.

The maximum flux observed outside SAA during that SPE reached $7.2 \text{ part/cm}^2 \cdot \text{s}$ and the dose rate reached $107.8 \text{ } \mu\text{Gy/hour}$ on 07.03.2012, 13:06 UT at $L = 4$, $\text{Lat} = -51.1^\circ$, $\text{Long} = 166.8^\circ$, $\text{Alt} = 422 \text{ km}$. The averaged absorbed dose rate D1 outside SAA during SPE was $8.43 \text{ } \mu\text{Gy/h}$ and the averaged flux was $0.59 \text{ part/cm}^2 \cdot \text{s}$. The total additional absorbed dose received during the SPE was about $180 \mu\text{Gy}$.

In Fig. 5 the particle flux F of protons with energies $> 10, 50$ and 100 MeV measured by

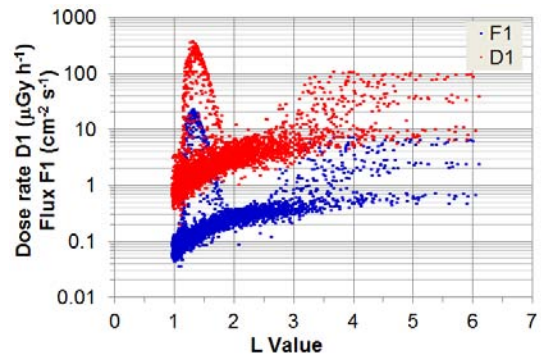


Fig. 3. Distribution of particle flux F1 (bottom) and dose rate (top) in D1 detector located at 40 mm depth in the phantom as a function of L value during SPE.

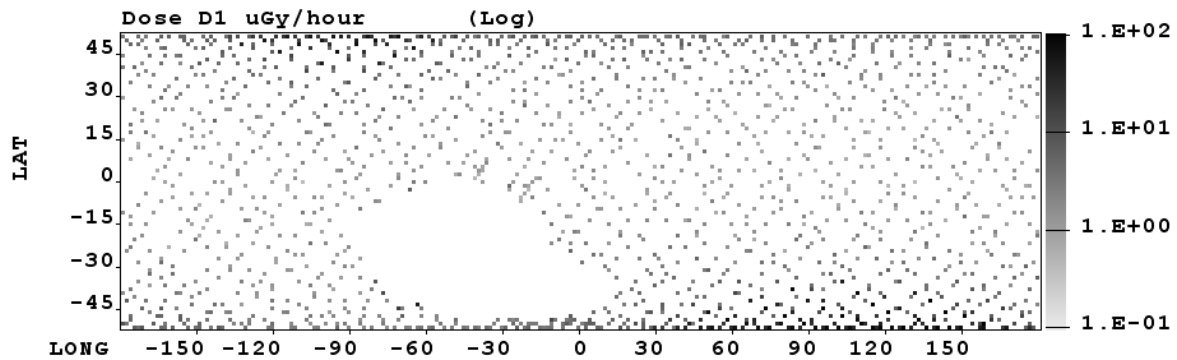


Fig. 4. Geographical distribution of dose rate in detector D1 measured outside SAA during SPE.

GOES-13, the dose rate in D1 detector of Liulin -5 measured outside SAA, and L-values are plotted versus time from March 7, 07:00 UT to March 9, 22:00 UT, 2012. It is seen that the trend of Liulin -5 dose rate during that period of the SPE corresponds to the trend of the proton flux with energies above 100 MeV (protons with lower energies do not penetrate inside ISS).

LET spectra, quality factor and dose equivalent

The LET spectra, obtained during and after the SPE (GOES flux of protons with energies $> 100 \text{ MeV}$ falling below the threshold) taken on ISS orbits outside SAA are plotted in Fig. 6 together with the corresponding orbits. The differences in both LET spectra are due to the difference in their sources – the spectrum during SPE includes GCR (protons and heavier ions) and solar particles (protons mainly), the spectrum after the SPE is composed of GCR only. The quality factor Q_{av} calculated from

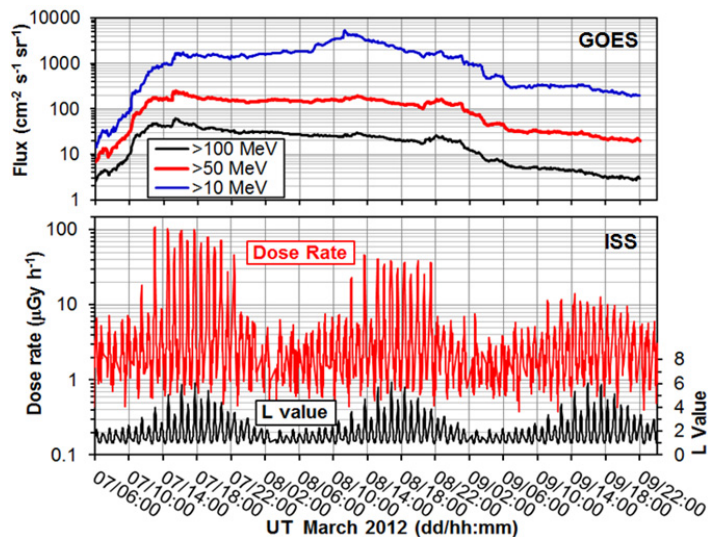


Fig. 5. GOES-13 flux data of protons with energies above $10, 50$ and 100 MeV (from upper to lower curve on top plot), Liulin-5 dose rate measured outside SAA (upper curve on bottom plot) and corresponding L values (lower curve on bottom plot) versus time during and after SPE.

the LET spectrum during the SPE was 2.5, leading to 21.1 $\mu\text{Sv/h}$ dose equivalent rate at 40 mm depth. After the SPE Q_{av} was 4.15, leading to 11 $\mu\text{Sv/h}$ dose equivalent. Significant contribution to the GCR Q_{av} have heavy ions (even though they are a small number of the total number of particles forming the GCR LET spectrum) with higher Q_{av} . During the SPE the LET spectrum outside the SAA is dominated by protons of solar origin, having smaller Q_{av} .

Comparison between doses measured in Liulin 5 and DB-8 dosimeter

In Fig. 6 the accumulated doses in Liulin- 5 and in DB-8 active dosimeter of the radiation control system on the Russian segment of the ISS in the time interval 07.03.2012, 00:00 UT to 11.03. 2012, 00:00 UT are plotted. The top two curves represent the data in the non-shielded detectors DB-8#1 and DB-8#4, located in different positions in the service module of the ISS. Two bottom curves represent the accumulated doses in Liulin- 5 detectors D3 (innermost) and D1 (outermost) in the phantom, located in MIM1 module of the ISS. Well seen is the sharp increase of the accumulated doses in the data from DB-8 between 07.03.2012, 12:00UT and 09.03.2012, 00:00UT connected with the appearance of SPE. The accumulated in Liulin-5 doses show similar but not so sharp trend, because they are heavier shielded inside the phantom.

Conclusion

During the SPEs of 7-12 March 2012 at $3 < L$ the particle flux and dose rates increased in all three detectors located at 40, 60 and 165 mm depths along the phantom's radius. The penetration of SEP on ISS orbit was observed at high geographic latitudes in the region of the south and north Earth magnetic poles till 08.03.2012, when the flux of the solar protons with energies greater than 100 MeV

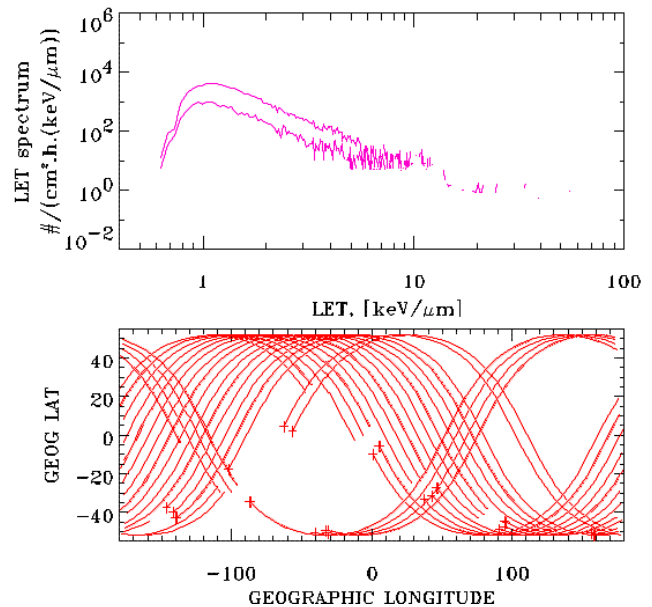


Fig. 5. LET spectra (top plot) and corresponding ISS orbits (bottom plot). Upper curve in the spectra – measurements during SPE, bottom curve - measurements after the end of SPE.

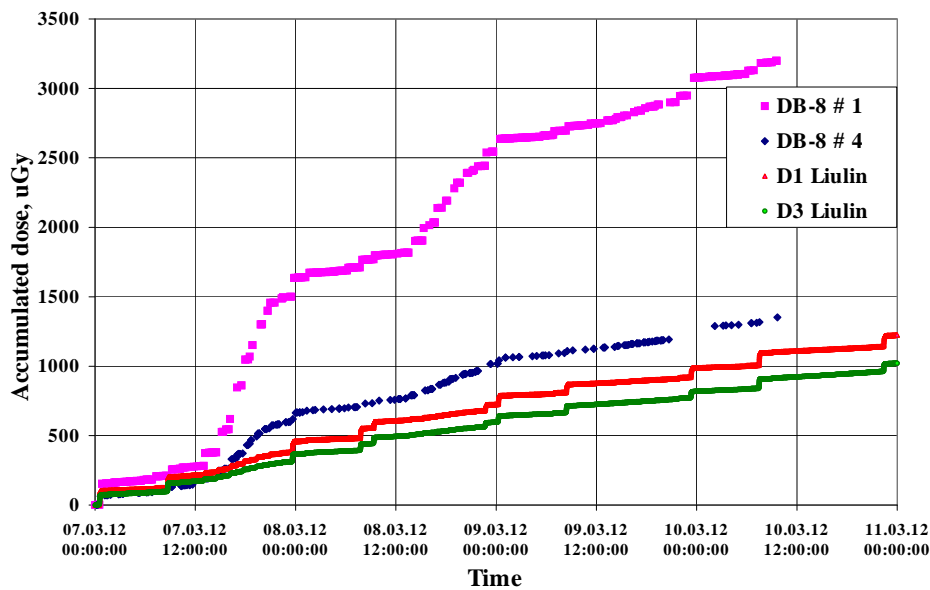


Fig. 6. Comparison between accumulated doses measured in the detectors of Liulin -5 (two lower curves) and DB-8 dosimeters (two higher curves) in the time interval 07.03.2012, UT 00:00 to 11.03. 2012, UT 00:00

able to penetrate inside the ISS fall below the threshold of 10 part/cm².s.sr. The maximum flux at 40 mm depth outside the SAA during the SPE was 7.2 part/cm².s and the maximum dose rate was 107.8 µGy/h at L = 4, Lat = - 51.1⁰, Long =166.8⁰, Alt= 422 km. The averaged dose rate D1 outside the SAA during the SPE was 8.43 µGy/h and the flux was 0.59 part/cm².s. The averaged dose rate outside the SAA for quite time about 11 hours after the end of SPE was 2.65 µGy/h. The additional absorbed dose received during the SPE was approximately 180 µGy. Outside the SAA during the SPE the radiation quality factor was 2.5 leading to 21.1 µSv/h dose equivalent rate at 40 mm depth in the phantom. After the SPE, the quality factor of GCR was 4.15, leading to 11 µSv/h dose equivalent rate outside the SAA. The additional dose equivalent received during the SPE was about 448 µSv. The accumulated doses during the SPE in Liulin-5 detectors, located in the phantom in MIM1 module of the ISS are lower, than the doses accumulated in the non-shielded detectors DB-8#1 and DB-8#4 of the radiation control system on the ISS, located in different positions in the service module of the ISS. There is a good agreement of Liulin-5 dose rates during and after the SPE with the flux of protons of energies > 100 MeV measured by GOES –13 satellite.

Acknowledgements

This work is partly supported by grant DID-02/8 from the National Science Fund and by the Agreement between BAS and RAS on fundamental space research. The authors are obliged to NIRS, Chiba-Japan for the organization of the calibrations of Liulin-5 instrument at HIMAC.

References:

1. Apathyl, Y u. Akatov, V. Arkhangel'sky, et al. TL measurements on board the Russian segment of the ISS by the "Pille" system during Expedition -8, -9 and -10. *Acta Astronaut.* 60, 322-328, 2007.
2. Semkova, J., R. Koleva, St. Maltchev, et al. Radiation characteristics in the spherical tissue-equivalent phantom on the ISS during solar activity minimum according the data from Liulin-5 experiment, *Journal of Atmospheric and Solar-Terrestrial Physics*, 2012, <http://dx.doi.org/10.1016/j.jastp.2012.07.006>
3. Golightly, M., Hardy, C., Atwell, W. et al. Description, analysis and impact of major solar activity during recent U.S. shuttle missions. *Adv. Space Res.* 12 (23), 335-338, 1992.
4. Lobakov, A.P., Liagushin, V.I., Panasiuk, et al. Increase of solar cosmic rays on the "MIR" Space station in orbit during September-October 1989. *Nuclear Tracks and Radiation Measurements* 20 (1), 59, 1992.
5. Shurshakov, V.A., Petrov, V.M., Panova, N.A., et al. Experimental investigations of quasistable radiation belts formed after solar proton events in September-October 1989 and March 1991 based on measurements made by Liulin dosimeter-radiometer on board the Mir space station. *Advances in Space Research* 18 (12), 251-256, 1996.
6. Dachev, Ts. P., J. V. Semkova, Yu. N. Matviichuk, et al, Inner Magnetosphere Variations after Solar Proton Events. Observations on MIR Space Station In 1989-1994 Time Period, *Adv. Space Res.*, 22, (4), 521 - 526, 1998.
7. Dachev, TsP, Matviichuk, Ju N, Semkova, J.V., et al. Space radiation dosimetry with active detectors for the scientific program of the second Bulgarian cosmonaut on board of Mir space station. *Adv. Space Res.* 9 (10), 247-251, 1989.
8. Dachev, Ts., Yu. Matviichuk, N. Bankov, et al. "MIR" radiation dosimetry results during the solar proton events in September - October 1989, *Adv. Space. Res.*, 12, No. 2-3, (2) 321, 1992.
9. Бенгин, В.В., Т.А. Костерева, В.С. Махмутов, и др, Исследование радиационной обстановки на борту станции "МИР" во время солнечного протонного события 29 сентября 1989 г. с помощью дозиметра-радиометра "Люлин", *Космические исследования*, 30, 5, 700, 1992
10. Petrov, M.V., Makhmutov, V.S., Panova, N.A., et al. Peculiarities of the Solar Proton Events of October 19, 1989 and March 23, 1991 According to the Measurements On Board the MIR Space Station. *Adv.Space Res.* 14 (10), 645, 1994.
11. Shurshakov, V. A., V. M. Petrov, YuV Ivanov, et al. Solar particle events observed on MIR station, *Radiation Measurements*, Volume 30, Issue 3, 317-325, 1999
12. Kartsev, I., S., Akatov, Yu. A., Eremenko, V. G., et al., Spherical phantom for studying radiation conditions in outer space. Design-structural special features. *Nuclear Measurement & Information Technologies*, 16, 36-45, 2005.
13. Semkova, J., Koleva, R., Maltchev St., et al. Radiation measurements inside a human phantom aboard the International Space Station using Liulin-5 charged particle telescope. *Adv. Space Res.*, 45, (7), 858-865, 2010.
14. Semkova, Jordanka, Rositza Koleva, Overview On The Radiation Quantities Observed By Liulin-5 Instrument In A Human Phantom On International Space Station During The Minimum Of 23rd Solar Cycle, *Compt. Rend. Acad. Bulg. Sci.*, 63, (10), 1533-1542, 2010
15. Семкова, Й., Р. Колева, Н. Банков и др. Исследование радиационной обстановки на международной космической станции с помощью дозиметра «Люлин-5». *КОСМИЧЕСКИЕ ИССЛЕДОВАНИЯ*, 51, (2), 136–144, 2013
16. ICRP, Report No. 60, Pergamon Press, Oxford, 1991.